

Blairgowrie, Marton-In-Cleveland



£185,000

**IH** INGLEBY HOMES





Situated within this favoured Marton development, whilst occupying a lovely end-plot which brings a large drive, front garden, and established rear garden, this attractive three-bedroom property certainly merits early inspection.

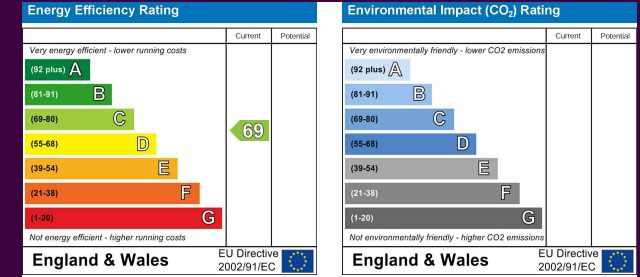
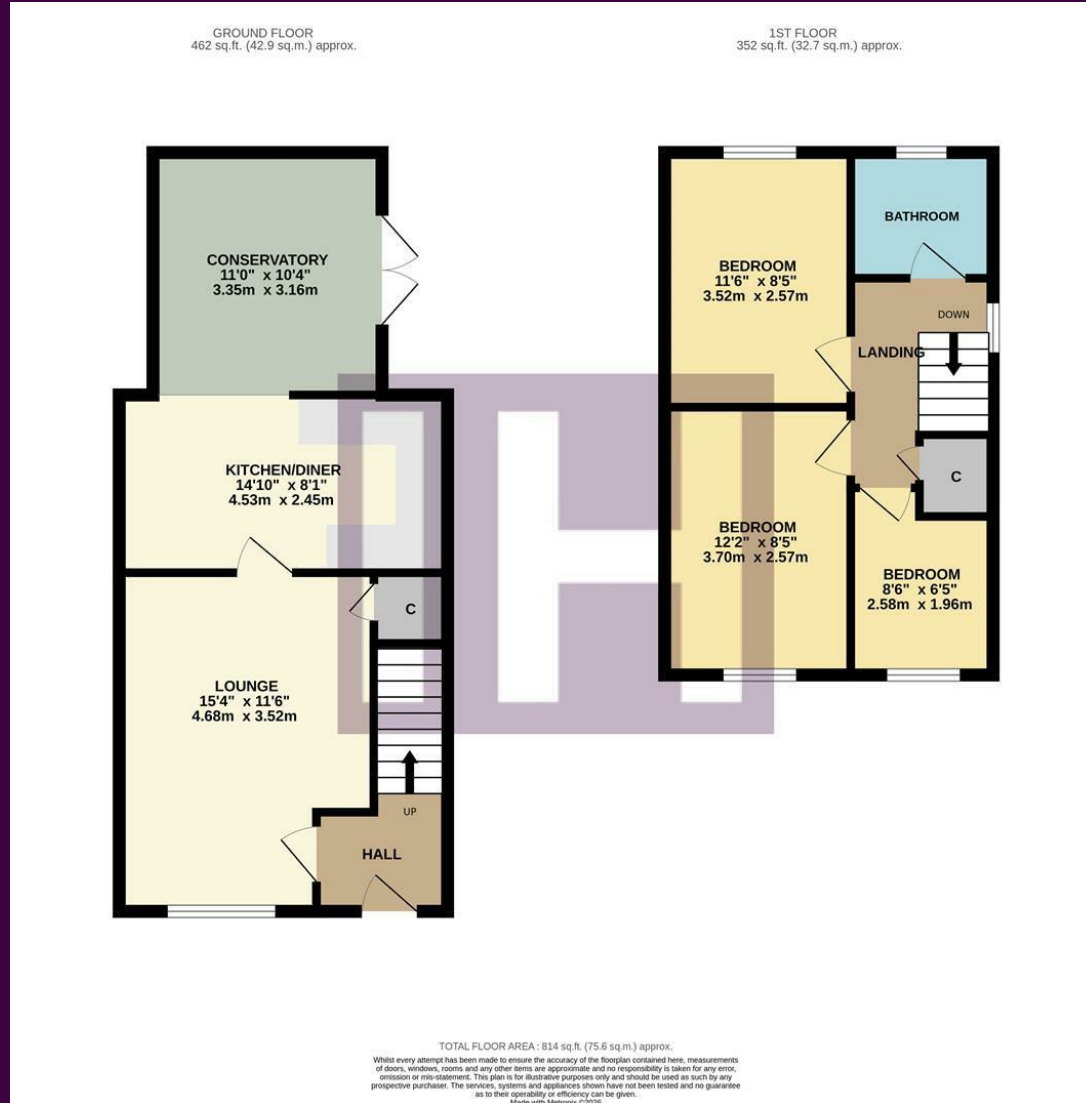
A large rear conservatory addition has significantly enhanced the living space, and is open-plan to the modern kitchen/diner, whilst the ground floor also brings an entrance hall and spacious lounge. The first floor delivers three good bedrooms, and the family bathroom.



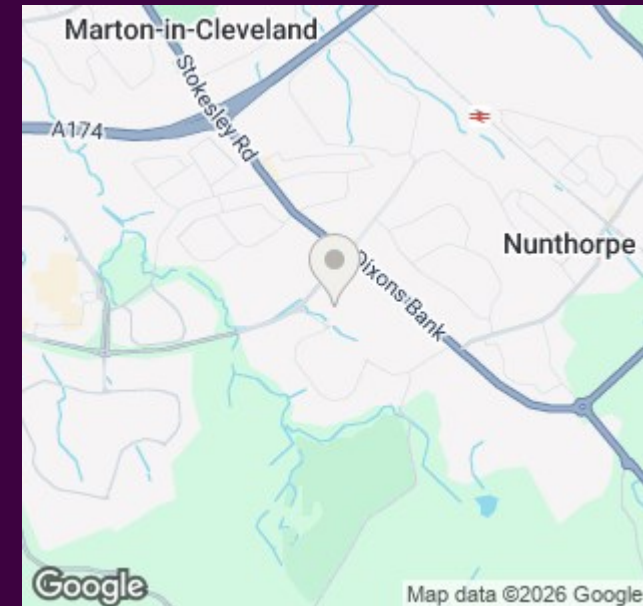
Benefitting from full UPVC double glazing and gas central heating, this is a property that will undoubtedly appeal to first time buyers and young families in particular.

The paved frontage/drive can accommodate several vehicles and passes the front garden, along the side of the home, widening at the front. The rear garden is full fence enclosed, with large patio, and tiered lawns with an established, green natural surround.

# The Layout



# The Location



Council Tax Band:  
Tenure:

**C**  
Freehold



- Sought-after 'Marton' location
- Attractive plot with generous drive and gardens
- Large rear conservatory open-plan to the modern kitchen/diner
- Separate spacious lounge
- Available with 'No Forward Chain'